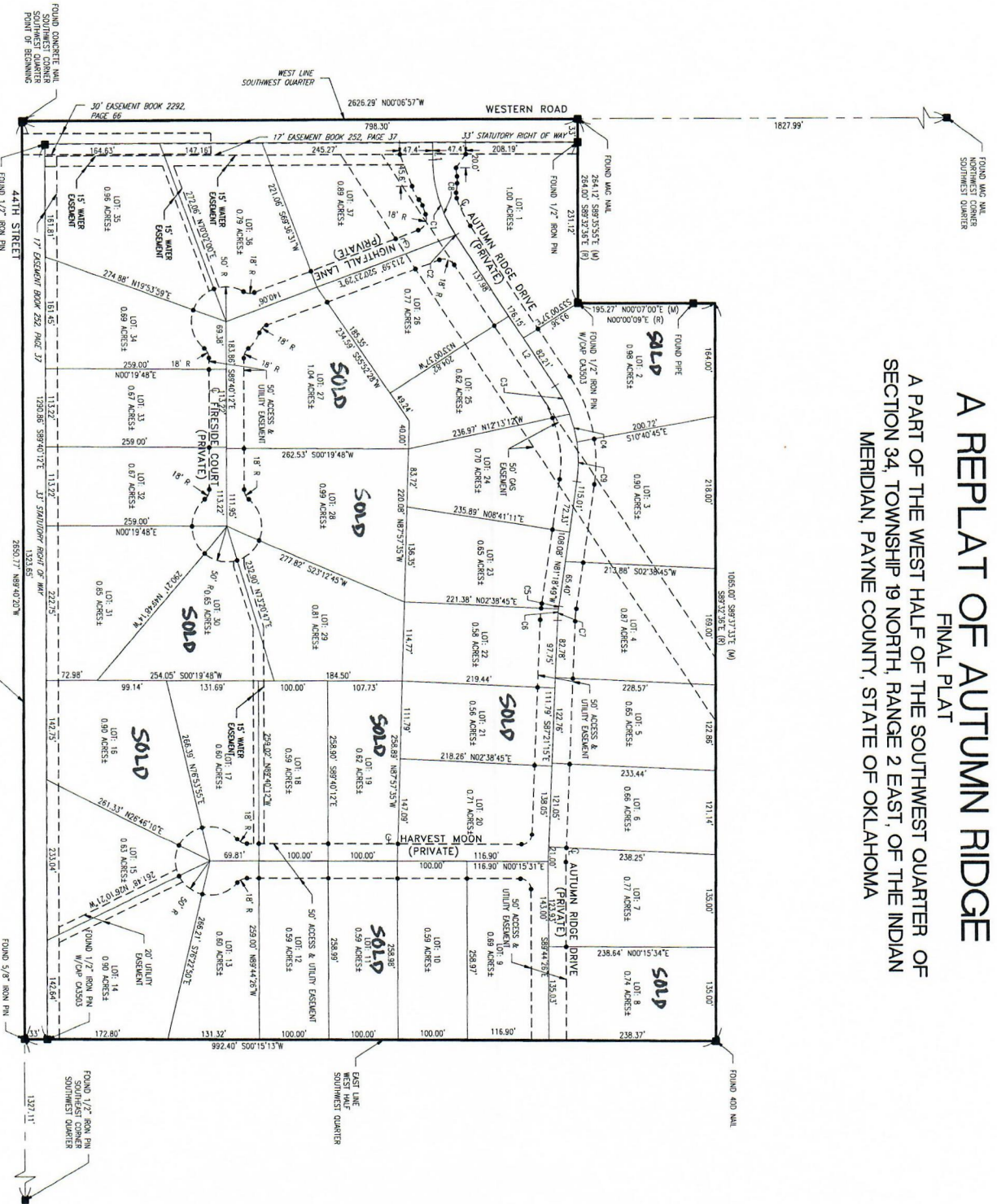


# A REPLAT OF AUTUMN RIDGE FINAL PLAT

A PART OF THE WEST HALF OF THE SOUTHWEST QUARTER OF SECTION 34, TOWNSHIP 19 NORTH, RANGE 2 EAST, OF THE INDIAN MERIDIAN, PAYNE COUNTY, STATE OF OKLAHOMA



## SURVEY LEGEND

- SET 1/2" IRON PIN W/CP#
- TOUGHEN UNLESS NOTED
- FOUND MONUMENT AS NOTED
- (R) RECORDED CALL
- (M) MORGAN CALL
- (N) IRON PINS SET AT ALL CORNERS UNLESS OTHERWISE NOTED

Lot #/Corner #	Length/Area	Direction/Chord Bearing	Chord Distance	Remark
C1	114.28'	N17°33'05"E	112.728	200.000
C2	0.67'	N67°05'10"E	0.673	200.000
C3	46.18'	S83°35'43"W	46.014	156.539
C4	42.00'	S78°13'02"W	41.925	200.000
C5	4.06'	S81°53'42"E	4.058	200.000
C6	17.03'	S84°54'4"E	17.022	200.000
C7	21.09'	S84°20'27"E	21.076	200.000
C8	114.93'	N127°18'E	113.374	200.000
C9	57.43'	N88°27'24"W	57.234	200.000
L1	25.18'	N89°55'13"E		

