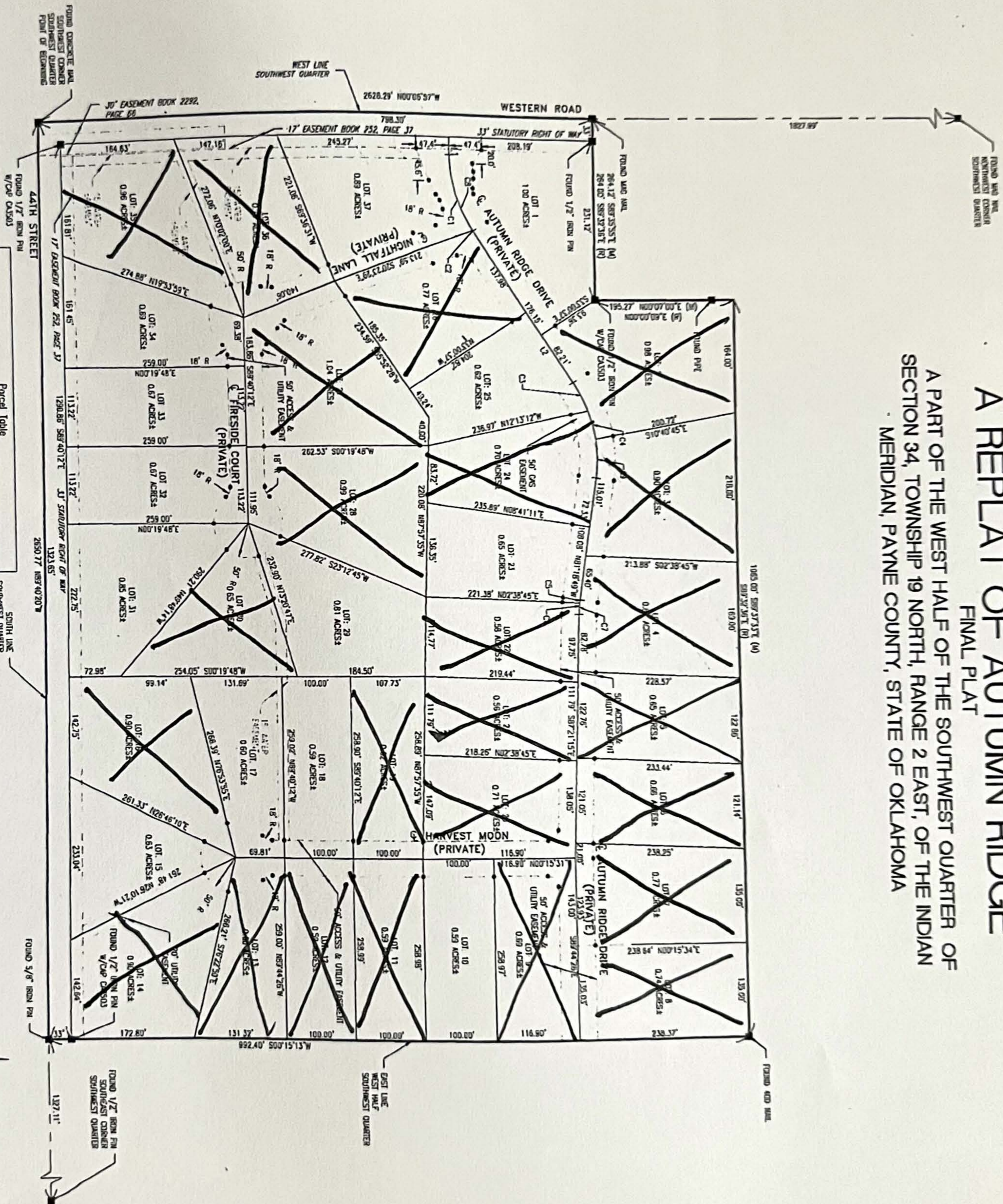


A REPLAT OF AUTUMN RIDGE FINAL PLAT

A PART OF THE WEST HALF OF THE SOUTHWEST QUARTER OF
SECTION 34, TOWNSHIP 19 NORTH, RANGE 2 EAST, OF THE INDIAN
MERIDIAN, PAYNE COUNTY, STATE OF OKLAHOMA



SURVEY LEGEND

- SET 1/2" IRON PIN W/CAPE
 - THESISIT* UNLESS NOTED
 - FOUND MARKING AS NOTED
 - (R) RECORDED CALL
 - (M) MEASURED CALL
- IRON PINS SET AT ALL CORNERS
UNLESS OTHERWISE NOTED

Line I/Curve I	Length/Arc Length	Bearing/Card Bearing	Chord Distance	Radius
C1	114.28'	N73.3305°E	112.729	200.000
C2	0.67'	S57.0510°E	0.673	200.000
C3	46.18'	S63.3543°W	46.014	156.539
C4	42.00'	S76.1502°W	41.975	200.000
C5	4.08'	S91.5342°E	4.058	200.000
C6	17.05'	S84.5454°E	17.022	200.000
C7	21.05'	S84.7002°E	21.018	200.000
C8	114.95'	N73.7718°E	113.374	200.000
C9	57.45'	N89.3724°W	57.234	200.000
L1	25.16'	N89.5513°E		

