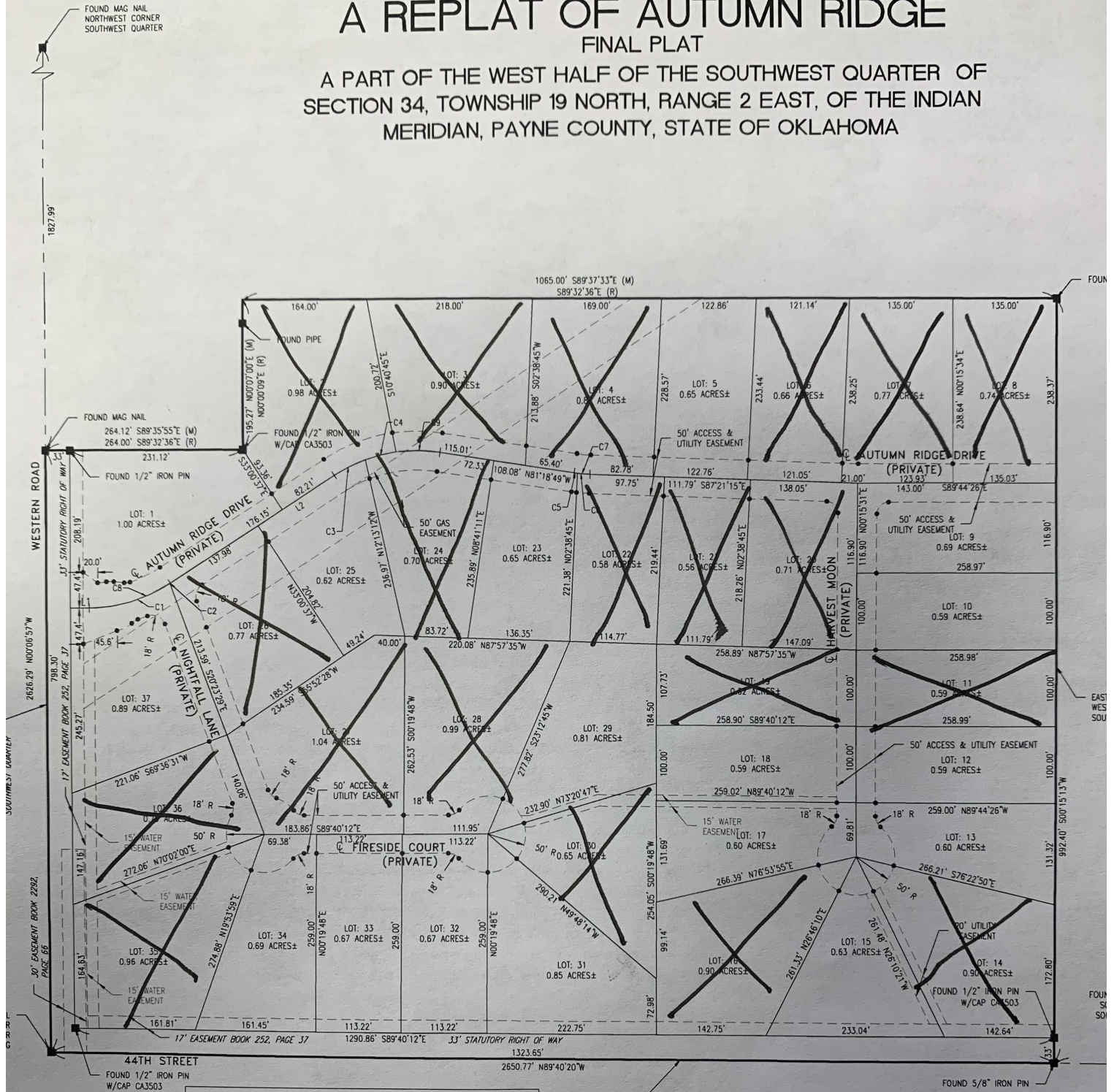


# A REPLAT OF AUTUMN RIDGE FINAL PLAT

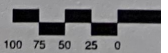
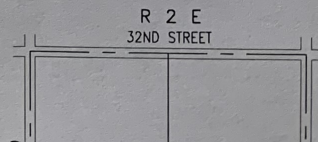
A PART OF THE WEST HALF OF THE SOUTHWEST QUARTER OF  
SECTION 34, TOWNSHIP 19 NORTH, RANGE 2 EAST, OF THE INDIAN  
MERIDIAN, PAYNE COUNTY, STATE OF OKLAHOMA



Line #/Curve #	Length/Arc Length	Direction/Chord Bearing	Chord Distance	Radius
C1	114.28'	N73°33'05"E	112.729	200.000
C2	0.67'	N57°05'10"E	0.673	200.000
C3	46.18'	S63°35'43"W	46.014	156.539
C4	42.00'	S76°13'02"W	41.925	200.000
C5	4.06'	S81°53'42"E	4.058	200.000
C6	17.03'	S84°54'54"E	17.022	200.000
C7	21.09'	S84°20'02"E	21.076	200.000
C8	114.95'	N73°27'18"E	113.374	200.000
C9	57.43'	N89°32'24"W	57.234	200.000
L1	25.16'	N89°55'13"E		

## KEY LEGEND

IRON PIN W/CAP  
UNLESS NOTED  
AS NOTED  
ALL  
CALL  
ALL CORNERS  
AS NOTED



GRAPHIC SCALE